

Forestry and nature – a Nordic approach

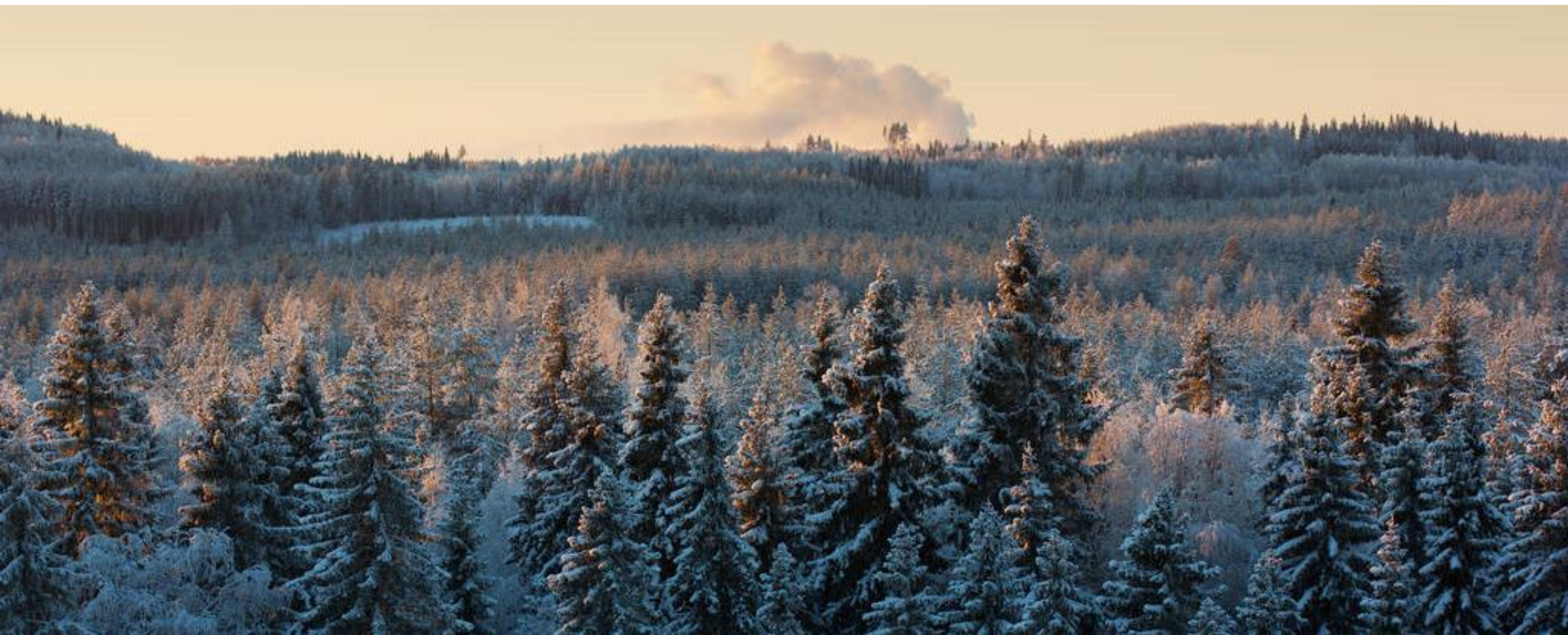
MTK webinar



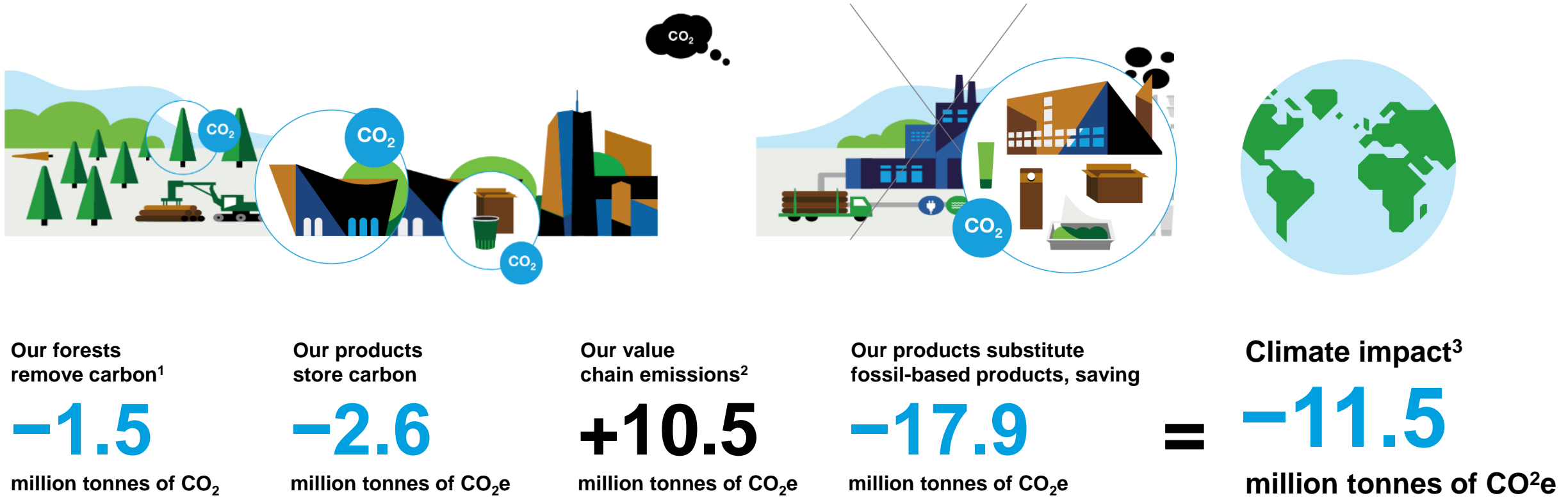
storaenso

Annica Bresky, President and CEO Stora Enso

Climate change: we're part of the solution



Stora Enso's annual estimated climate impact



**Everything
that's made
from fossil-based
materials today
can be made from a
tree tomorrow.**



Our promise drives our innovation



R&D expenditure in 2020

EUR 146 million

During 2020 we had

508

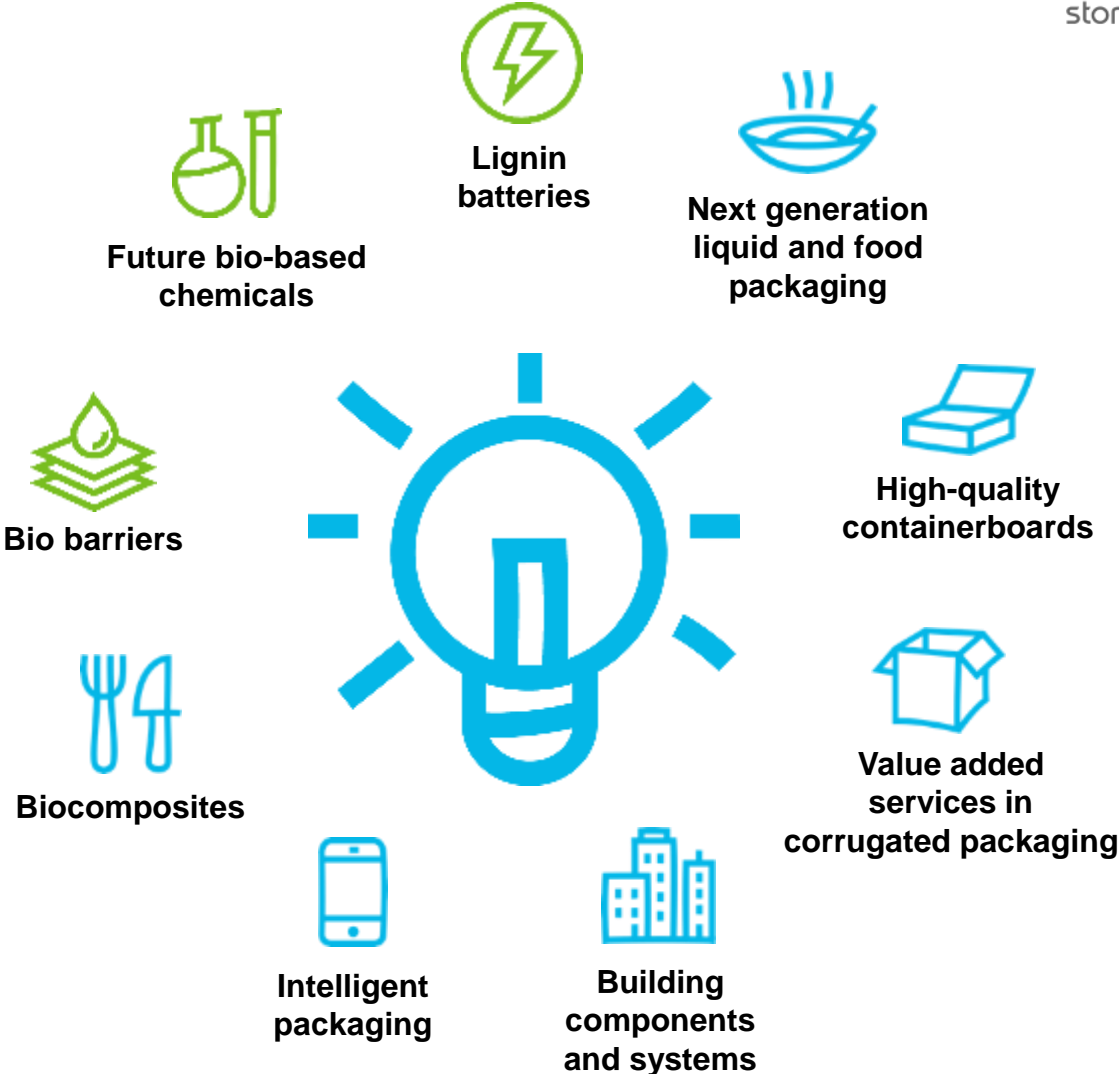
ideas

19

campaigns

69

patents filed

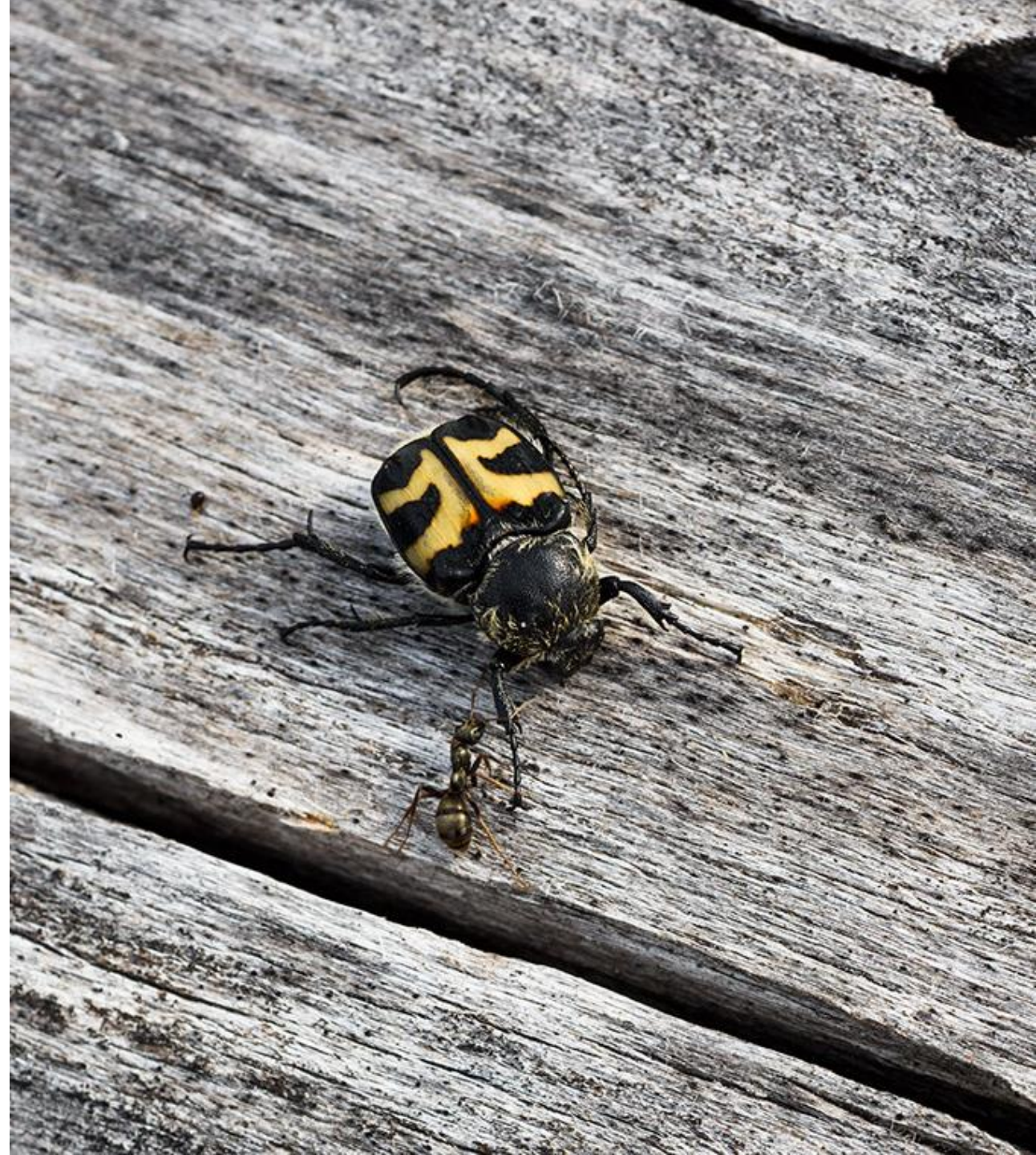


**It all starts
in the forest**



We are committed to safeguarding biodiversity

- Through sustainable forest management, we preserve biodiversity in our own forests and in cooperation with private forest owners.
- We maintain and enhance biodiversity in areas for wood production and set-aside areas.
- We develop and implement science-based holistic biodiversity indicators.
- We ensure a high certification rate of forests owned or managed by us.



Biodiversity is an integral part of our everyday forest management.

Biodiversity management practices in Northern forests

Decaying wood
Decaying wood provides an important habitat for a wide variety of forest species.

Retention trees
Provide continuum of decaying wood for forest species, such as birds who need it for nesting.

Forest structure
Variation in forest structure helps to maintain species and habitat diversity.

High stumps
During harvesting, we make artificial snags to increase the amount of deadwood.

Protection of valuable sites
In forest management planning, we identify and protect ecologically and culturally valuable sites.



Controlled burning
Creates suitable habitats for many fire-dependent species and enhances forest regeneration.

Soil and water protection
Harvesting, soil preparation and road building are planned to minimize adverse impacts to soil and water.

Buffer zones
Protect watercourses, connect and provide habitats for forest species and improve visual quality of the managed landscape.

An aerial photograph of a dense, green forest stretching towards a horizon under a bright blue sky with scattered white and grey clouds. The forest is composed of many small, individual trees, creating a textured green surface. The sky is a vibrant blue, with clouds of varying sizes and densities scattered across it, some catching the light and appearing white, while others are in shadow, appearing grey or dark blue.

We have a great responsibility to contribute to the EU's climate and biodiversity ambitions

- When designed right, forestry policy can enhance biodiversity and make forests more resilient to the impacts of climate change.
- A stable policy environment with a science-based approach to sustainable forest management is key.
- The EU Forest Strategy must continue to pave the way for the bioeconomy to enable the much-needed green transition.

The world needs a new approach to materials and consumption.



THE RENEWABLE MATERIALS COMPANY