

# **European Forest Institute**



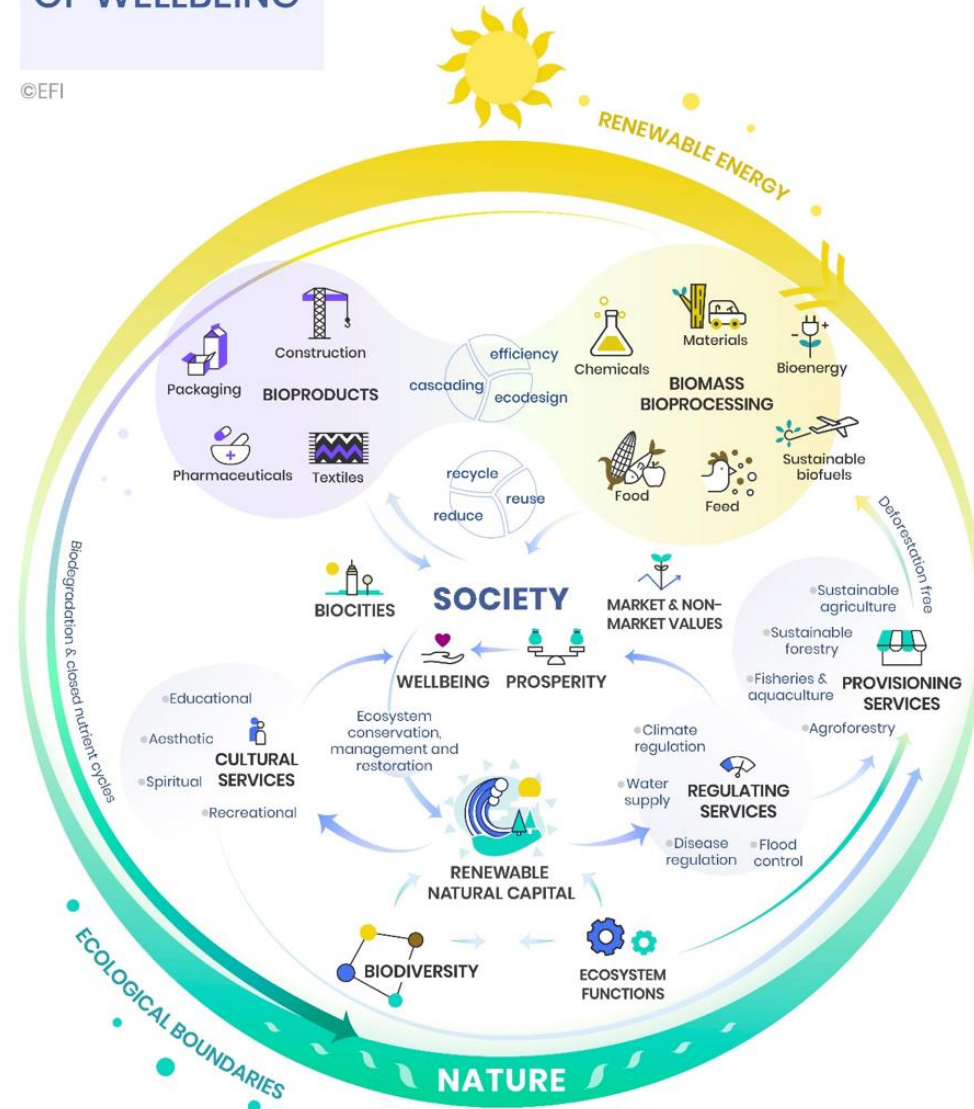
EUROPEAN FOREST  
INSTITUTE

# The key transformational role of forests in creating circular bioeconomy

Marc Palahí

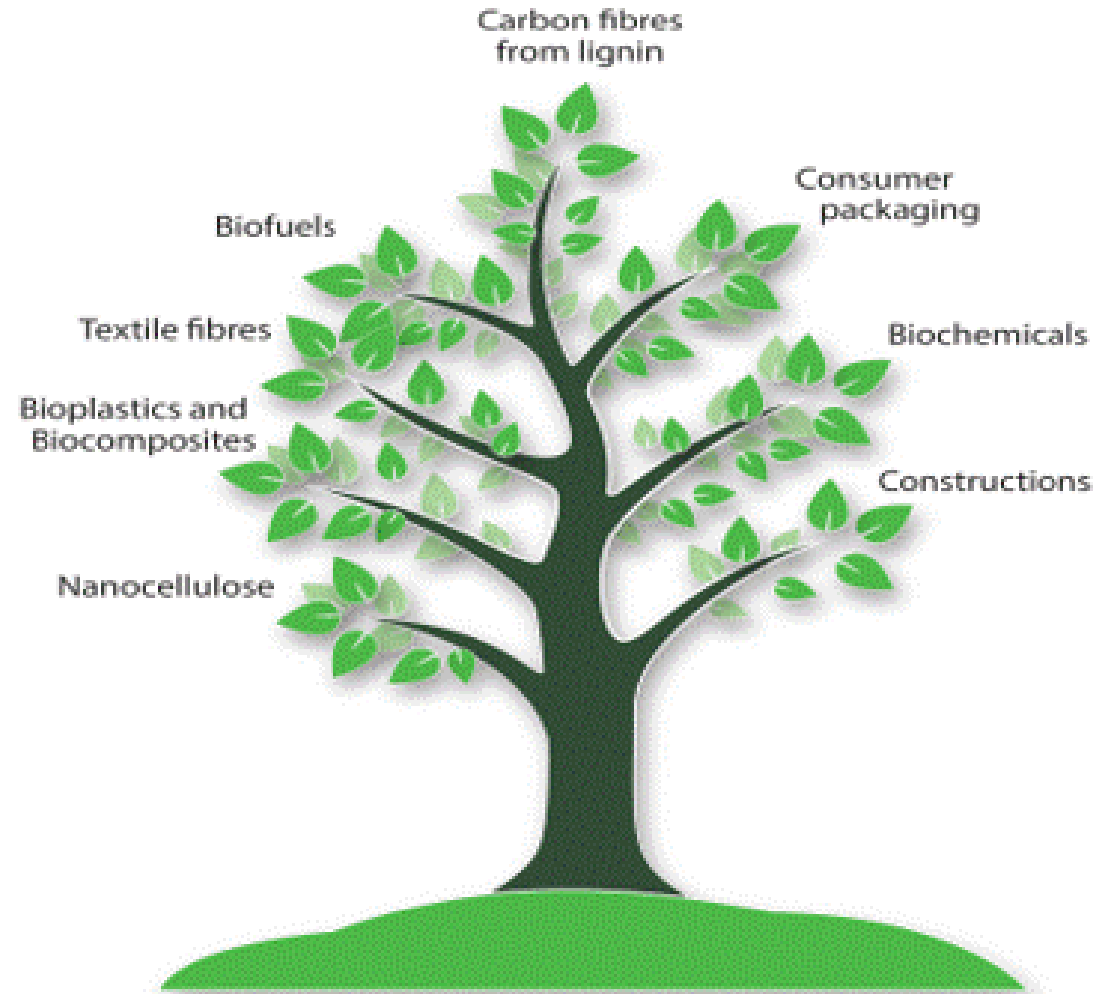
# Our “world”, too big for our planet





# Investing in Nature as the true engine of our Economy

# Forest resources: renewable solutions



# *Nanocellulose car*



# Wood-based textiles for sustainable fashion







# From niche to norm

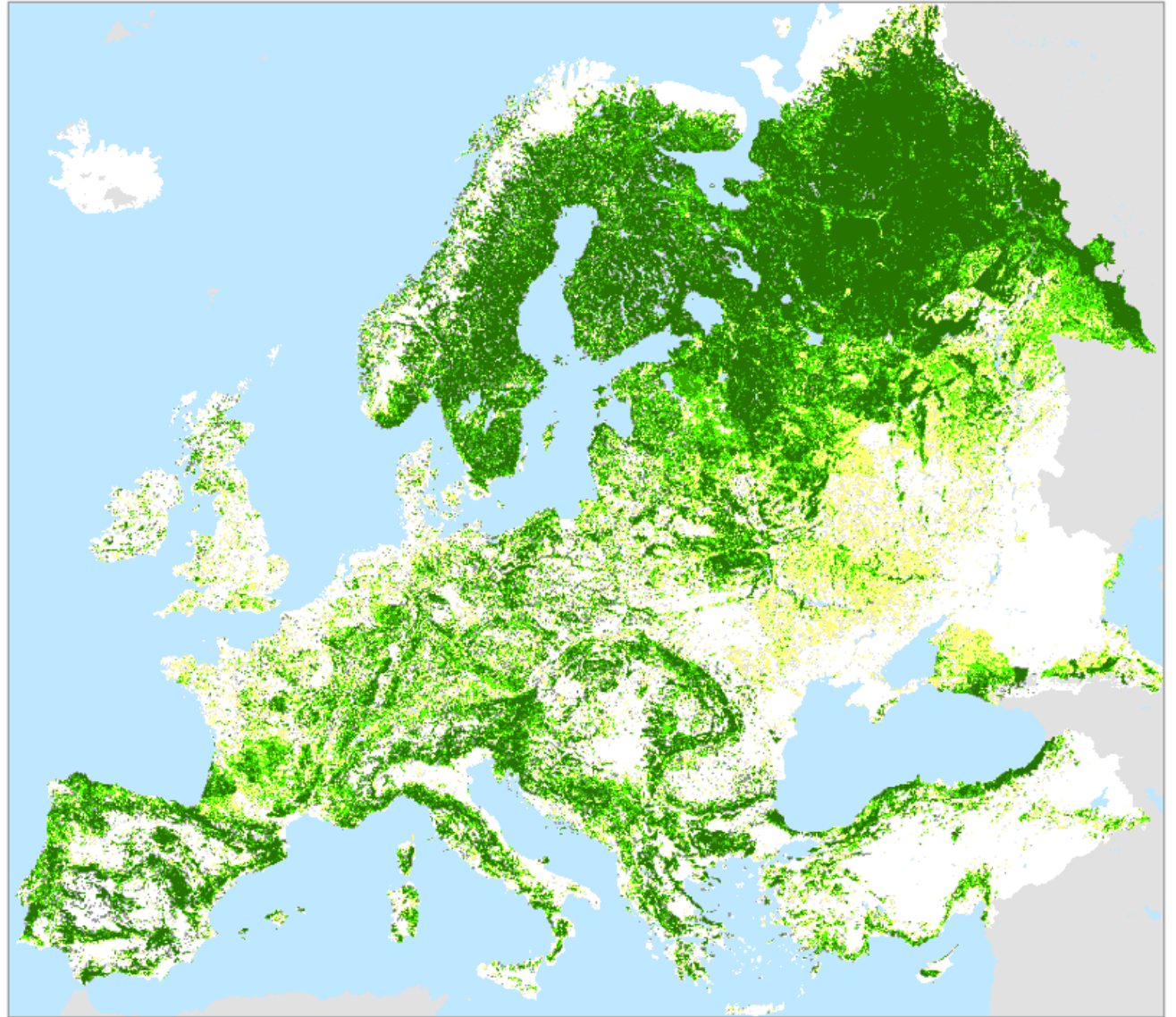
- Innovation
- Institutions
- Investments
- Infrastructures



Balázs W - stock.adobe.com

# Forests, our key biological infrastructure

- Largest carbon sink
- Main host of biodiversity
- Main terrestrial source of precipitation
- Greatest source of non-food renewable resources



# A new Deal for European Forests

nature

Explore content ▾ Journal information ▾ Publish with us ▾ Subscribe

nature > correspondence > article

CORRESPONDENCE · 25 MAY 2021

## EU forest strategy: adapt, innovate, employ

Marc Palahí 



European forests are crucial to achieving the European Green Deal – a socially and territorially fair transition to a circular bioeconomy, in which resources are renewable, biologically based, sustainably managed and reused whenever possible (M. Palahí *et al.* <https://doi.org/10.36333/k2a02>; 2020). The European Union Forest Strategy currently being drawn up needs actionable vision as climate change and natural disturbances erode forests' capacity to provide key ecosystem services. It could also generate a range of renewable options to



©AA+W - stock.adobe.com

# Adaptation-Restoration Plan

To ensure the long-term health and resilience of European forests both for **biodiversity and the bioeconomy**

Possible tools:

- **European-wide Payment for Restoration**
- **Adaptation fund**



©stefanorermajni - stock.adobe.com

# Innovation plan



To unlock its potential to create a **circular and climate-neutral** economy.

Tools

- **Public-private** partnerships
- Funds for **start-ups and scale-ups**
- **Business accelerators, including ecosystem services**
- **Demand-pull measures**

# Employment plan

- The forest-based sector: **key for a socially fair and green transition** in Europe
- An opportunity to **replace “fossil” jobs** in many European regions and sectors

Tools:

- **Training and transitioning programmes** to upgrade skills and reconvert “jobs” in key regions and sectors.

@DreamcatcherDiana

# An era of change?... A change of era!

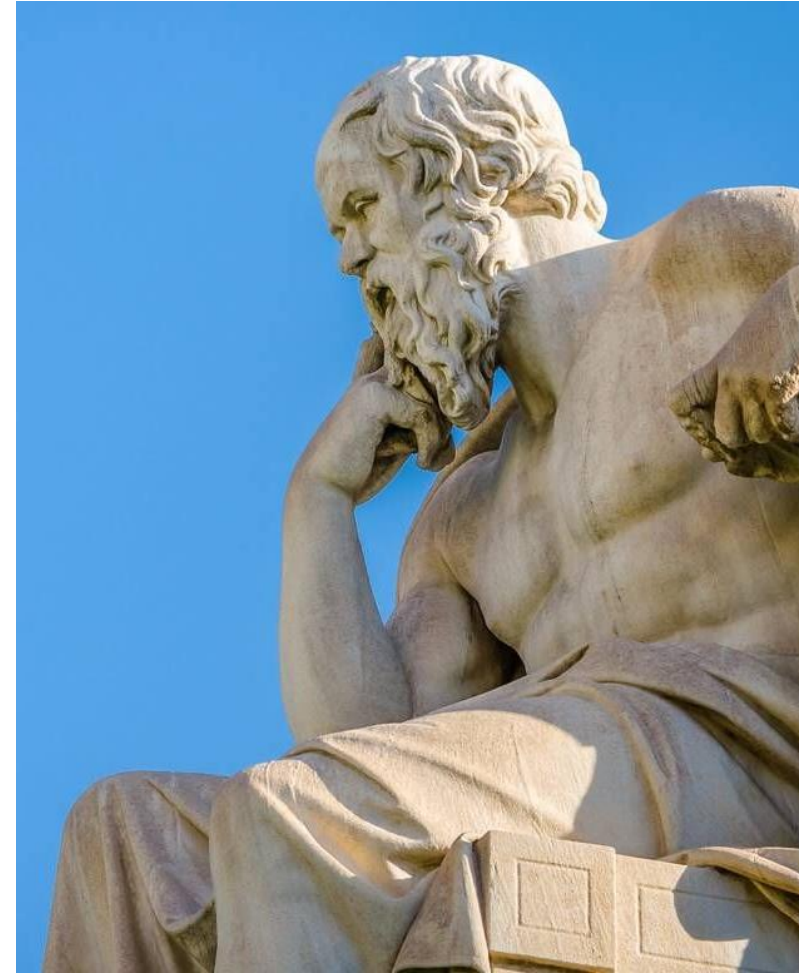
Needs to overcome the profound disconnection between **Society and Nature** by addressing the dichotomies of the fossil-industrial era

- Ecology-Economy
- Rural-Urban
- Bioeconomy-Biodiversity



©Urupong - stock.adobe.com

**The saddest aspect of life right now is that science gathers knowledge faster than society gathers wisdom”  
Isaac Asimov**







EUROPEAN FOREST  
INSTITUTE

*Connecting  
knowledge  
to action*